



HILCO® Transfer Valves

Uninterrupted Fluid Flow in Filters,
Coolers and Heat Exchangers



HILCO
FILTRATION SYSTEMS

Continuous Flow. Low Pressure Drop. Positive Sealing.

Hilliard has been a leading manufacturer of transfer valves (also referred to as diverter valves) for over 35 years. All HILCO® transfer valves provide:

- Low turning torque.
- Uninterrupted fluid flow during transfer
- Easy maintenance.
- Low Pressure Drop

Low Turning Torque

When pressure is properly equalized, HILCO® Valves turn with a fraction of the torque needed for ball valves or plug valves.

Uninterrupted Flow

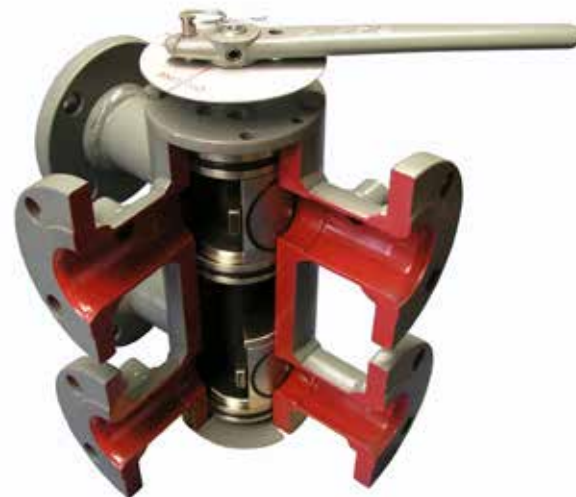
Valve pressure drop is not adversely affected during fluid transfer. Every valve comes standard with equalization ports or a pressure equalization line.

Easy Maintenance

HILCO® Valves can be rebuilt with new sealing pads and seals in about 15 minutes with common hand tools. The transfer valve allows for replacement of the pads without having to replace the entire valve. In fact, **HILCO® Transfer Valves don't have to be removed for maintenance.** The operation of this valve eliminates the need for jacking during the changeover procedure, like tapered plug valves. This assures that no contamination occurs in duplex filter applications.

Low Pressure Drop

HILCO® Valves are full-port designs.



HILCO 'B' pad Design



HILCO 'E' pad Design



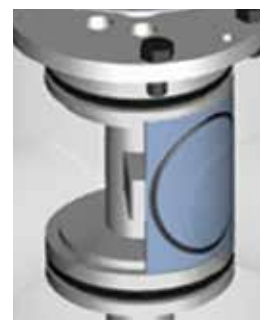
Sealing Pad Designs

The HILCO® valve pad design has evolved through the years and currently consists of two options:

B-Style Valves

- Provide metal to metal sealing. Sealing pad is 316 SS coated with a polymer-based moly- graphite coating for low turning torque.
- Available for all sizes.
- Maximum leakage of 40 ml/min on the off-line side (ISO VG 22 oil, 70 °F).

HILCO 'E' pad Design



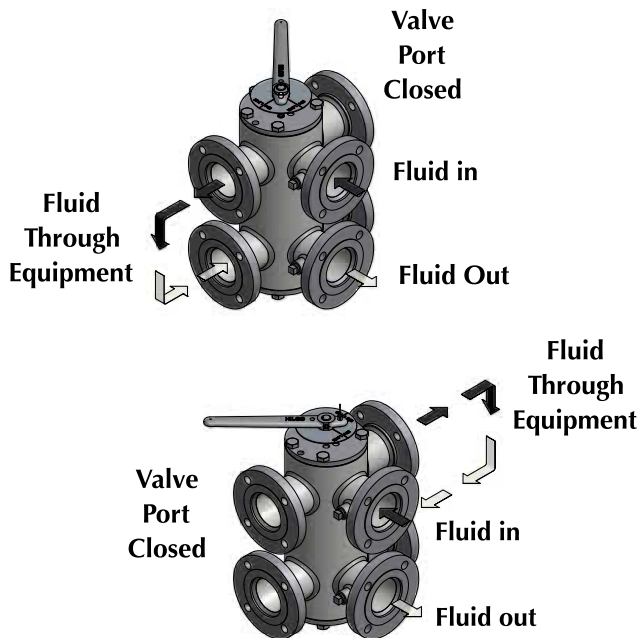
E-Style Valves

- Utilizes resilient Quad-Ring elastomer secured in a 316 SS pad.
- Available for sizes through 5". Standard for 1½", 2" and 3" sizes.
- Can be retrofitted into existing B-Style bodies.
- Maximum leakage of less than 1 ml/min leakage on the offline side (water).

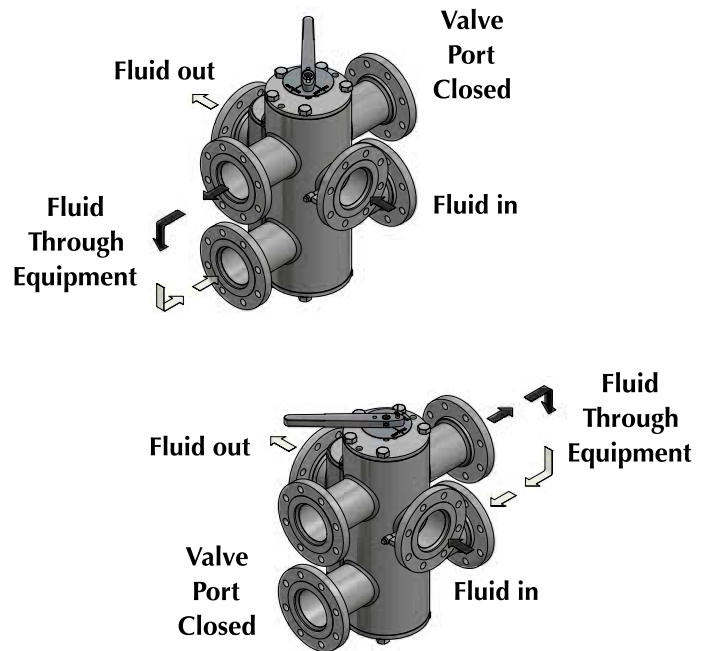
Features and Benefits of HILCO® Transfer Valves

- Available in 9 sizes:
- 1", 1½", 2", 3", 4", 5", 6", 8" and 10".
- Available in three configurations: three-way, six-port (same side and opposite side), and split three-way. Spring and pressure loaded pad design instead of plug – provides positive sealing to minimize leakage.
- Rugged, precision-machined, straight body heavy wall steel tubing for body material – minimizes valve distortion.
- Easy, inexpensive field maintenance. Entire valve components can be removed from the top or bottom of the valve.
- Pressure equalization ports are standard for every model.
- Fabricated construction can be welded into assemblies for minimal leak points.
- Adjustable linkage on split transfer valves.

Standard Version



Straight-Thru Version



Typical Applications

- Duplex filters
- Duplex shell and tube heat exchangers
- Duplex Plate & Frame heat exchangers
- Compressor lube and seal oil systems
- Fuel oil
- Water
- Chemicals
- Gasoline



Body/Shaft/Pad Materials

Body – Steel or 316/316L Stainless Steel
Shaft – Steel, 316/316L Stainless or Nodural iron
Pad – 316/316L Stainless Steel or 316/316L Stainless Steel with Viton® Elastomer.

Engineering Assistance. Quick Response.

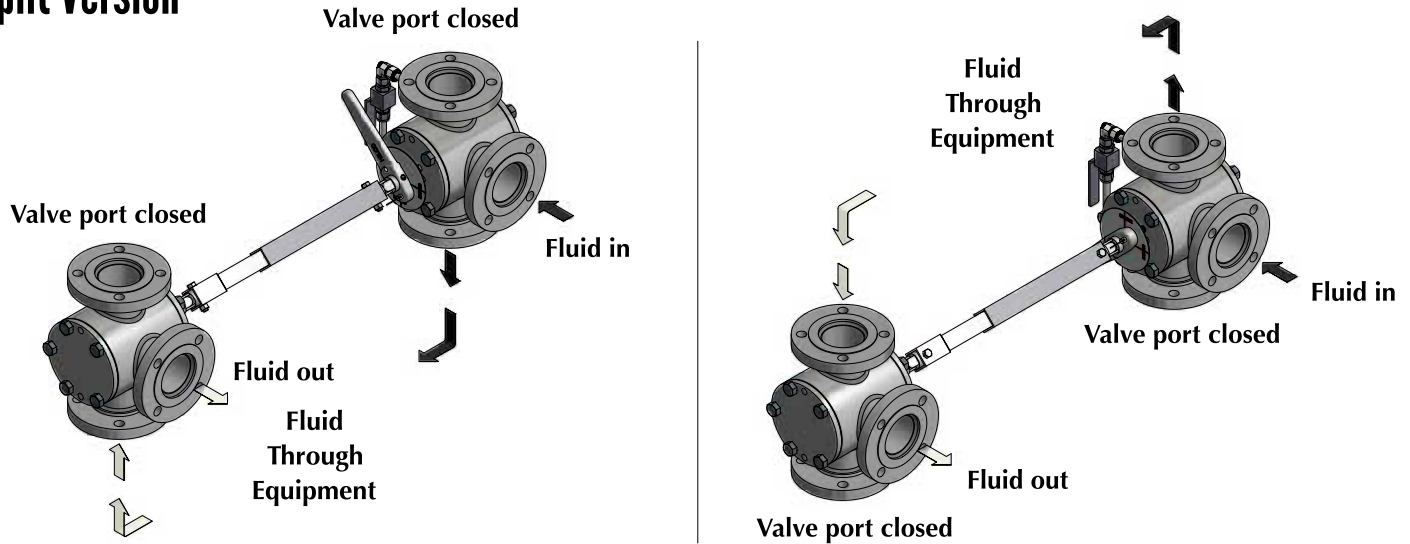
Hilliard offers engineering assistance for custom design to solve challenging applications.

We can explore numerous design options and quickly respond to your individual needs.

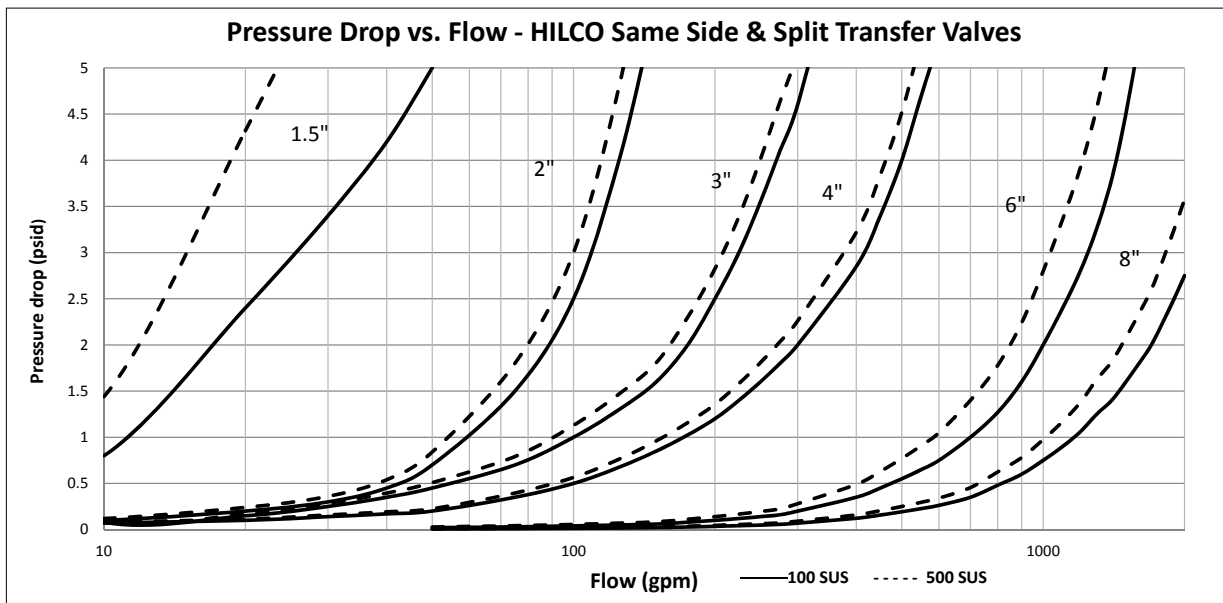
HILCO® has designs in place that match the mounting configurations of competitor's valves.

Contact Hilliard today to see how we can meet your transfer valve needs.

Split Version



Flow • Pressure Drop • Viscosity



The Hilliard Corporation

100 West Fourth Street
Elmira, New York
14902-1504 USA
PHONE: 607.733.7121
FAX: 607.737.1108
hilliardcorp.com
hilliard@hilliardcorp.com



Hilliard Products are
Made in the USA.



HILCO
FILTRATION SYSTEMS